

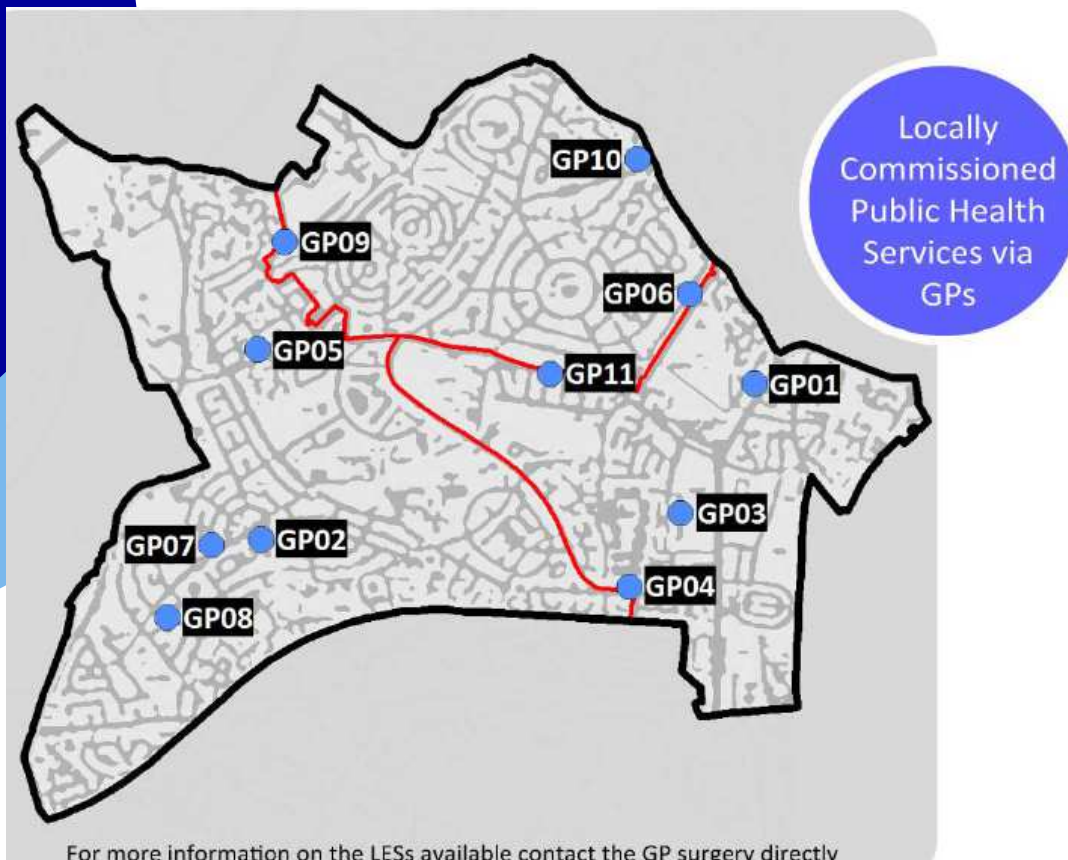
●●●●● Nottingham ●●●●●  
**● Crime & Drugs Partnership ●**

Working together to reduce crime, disorder & the misuse of drugs and alcohol

# Drug and Alcohol Service Provision within the West Area Committee

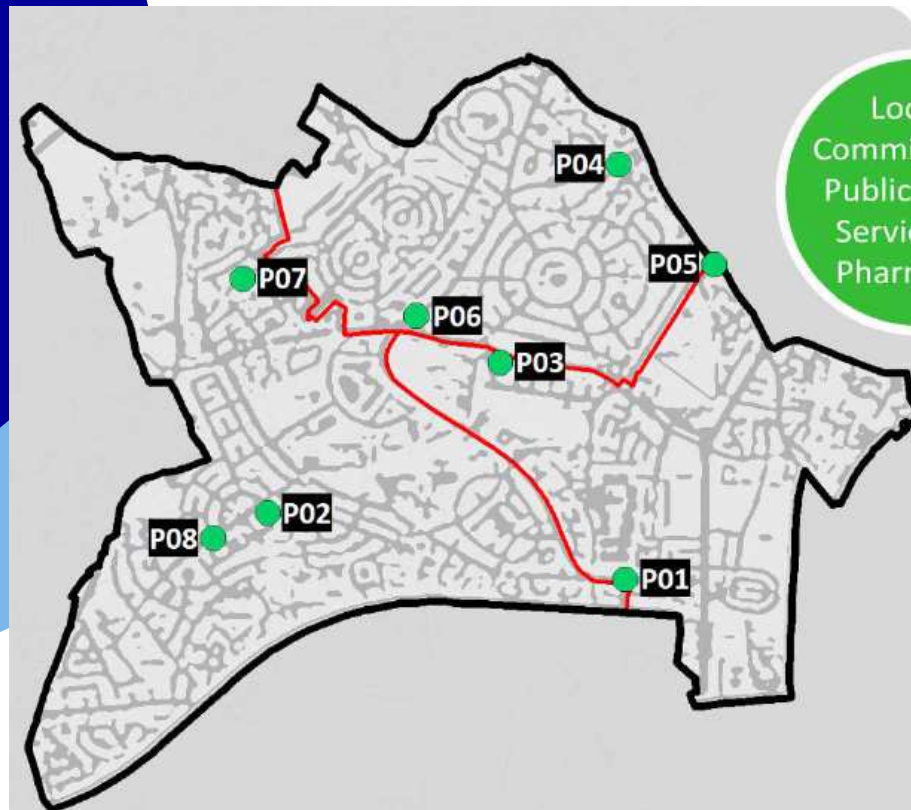


# GPs in the West Area Committee that offer drug and alcohol treatment services:



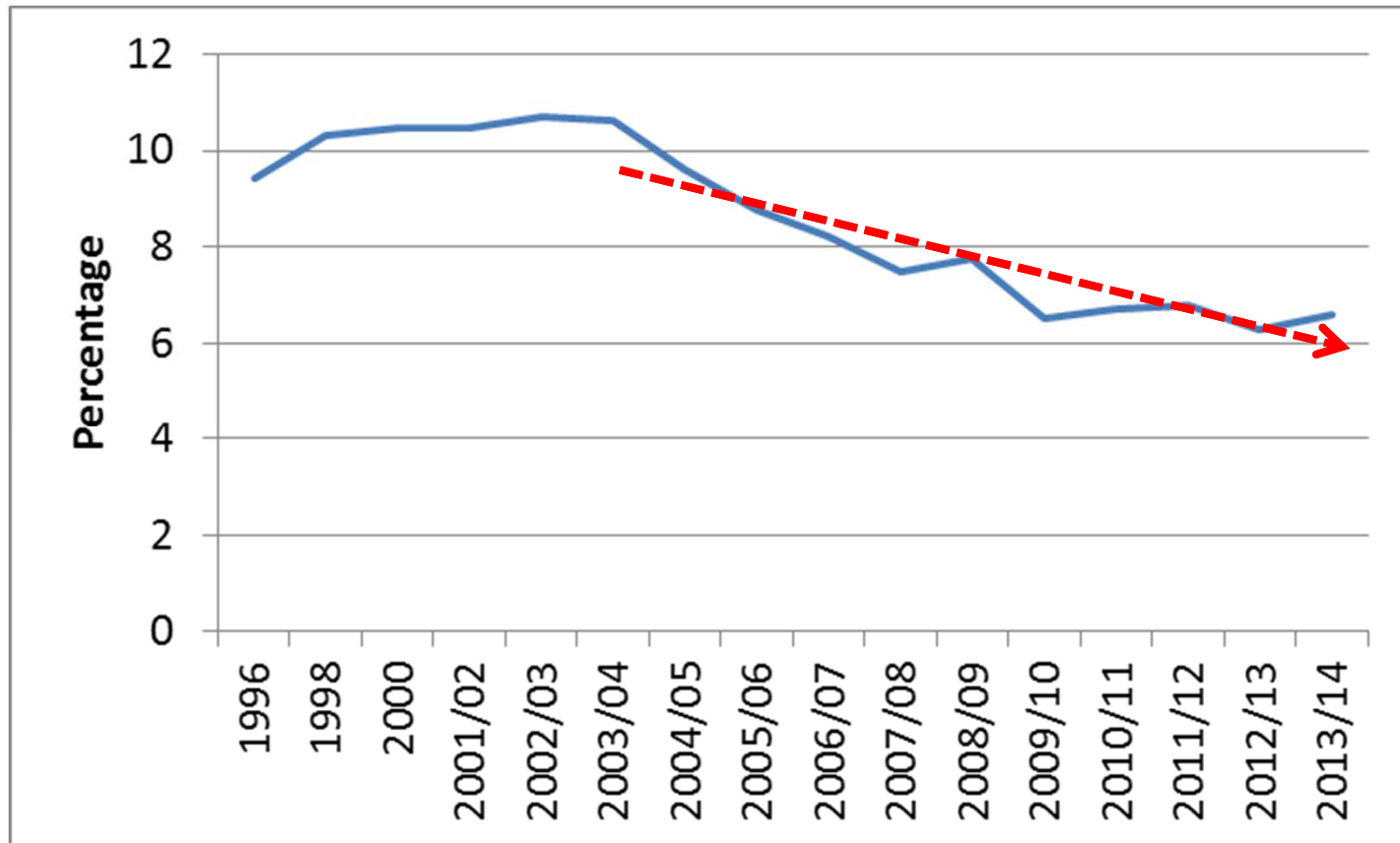
Key	Name	Alcohol	Asymptomatic Chlamydia Screening Service	Asymptomatic Sexual Health Screening	Sexual Health Screening Level 2	NHS Health Checks	Nexplanon (SDI)	Nexplanon - Non Registered patients	IUDs	IUD's Non Registered Patients	Substance Misuse
GP01	Boulevard Medical Centre	✓	✓			✓					✓
GP02	Bilborough Surgery	✓	✓			✓					
GP03	The Forest Practice	✓				✓	✓	✓	✓		✓
GP04	Beechdale Surgery	✓	✓			✓	✓		✓		✓
GP05	Strelley Health Centre					✓					
GP06	Melbourne Park Medical Centre	✓	✓			✓	✓		✓		
GP07	Bilborough Medical Centre	✓	✓	✓		✓	✓		✓		✓
GP08	Grange Farm Medical Centre	✓	✓	✓		✓	✓	✓	✓	✓	✓
GP09	RHR Medical Centre	✓	✓			✓	✓		✓		
GP10	Lime Tree Surgery	✓	✓	✓		✓	✓		✓		
GP11	Aspley Medical Centre	✓	✓			✓	✓		✓		

## Pharmacies in the West Area Committee that offer drug and alcohol services:



Key	Name	EHC	Chlamydia Treatment	Chlamydia Screening	C-Card Pick Up	C-Card Registration	Pregnancy Testing	Supervised Methadone	Supervised Subutex / Buprenorphine	Needle Exchange	NHS Health Checks	New Leaf
P01	Lloyds Pharmacy	✓	✓		✓		✓	✓	✓	✓		✓
P02	Coop Pharmacy	✓	✓		✓		✓	✓	✓			
P03	Boots The Chemist	✓	✓		✓		✓	✓	✓			
P04	Boots The Chemist	✓	✓		✓		✓	✓	✓			
P05	Vantage Pharmacy	✓	✓		✓		✓	✓	✓			
P06	Coop Pharmacy	✓	✓		✓		✓	✓	✓			
P07	Omega Chemist	✓	✓		✓							
P08	Boots The Chemist	✓	✓		✓		✓	✓	✓			

According to the Crime Survey for England and Wales (2012-13), the proportion of people who used cannabis in the last year has steadily reduced since a peak in 2003.



However, according to the same survey, use of 'legal highs' or NPSs has increased in the last year. We have also seen alcohol-related hospital admissions increase. This is indicative of a shift in drug use: **Away from opiates and towards NPSs and alcohol**

